

COX11 Antibody (C-term)
Purified Rabbit Polyclonal Antibody (Pab)
Catalog # AP20946c**Specification**

COX11 Antibody (C-term) - Product Information

Application	WB,E
Primary Accession	Q9Y6N1
Other Accession	Q6P8I6
Reactivity	Human
Predicted	Mouse
Host	Rabbit
Clonality	Polyclonal
Isotype	Rabbit IgG
Calculated MW	31430

COX11 Antibody (C-term) - Additional Information**Gene ID** 1353**Other Names**

Cytochrome c oxidase assembly protein COX11, mitochondrial, COX11

Target/Specificity

This COX11 antibody is generated from a rabbit immunized with a KLH conjugated synthetic peptide between 262-296 amino acids from the C-terminal region of human COX11.

Dilution

WB~~1:1000

E~~Use at an assay dependent concentration.

Format

Purified polyclonal antibody supplied in PBS with 0.09% (W/V) sodium azide. This antibody is purified through a protein A column, followed by peptide affinity purification.

Storage

Maintain refrigerated at 2-8°C for up to 2 weeks. For long term storage store at -20°C in small aliquots to prevent freeze-thaw cycles.

Precautions

COX11 Antibody (C-term) is for research use only and not for use in diagnostic or therapeutic procedures.

COX11 Antibody (C-term) - Protein Information**Name** COX11**Function** Exerts its effect at some terminal stage of cytochrome c oxidase synthesis, probably by

being involved in the insertion of the copper B into subunit I.

Cellular Location

Mitochondrion inner membrane; Single-pass membrane protein; Intermembrane side

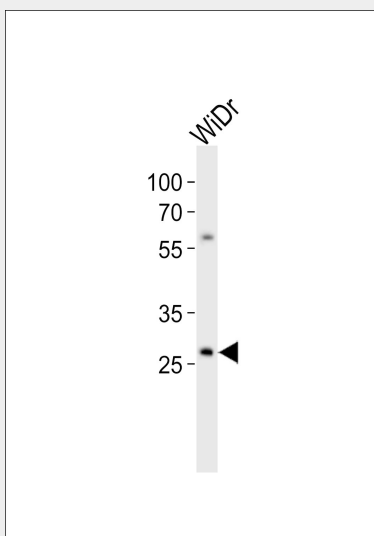
Tissue Location

Ubiquitous..

COX11 Antibody (C-term) - Protocols

Provided below are standard protocols that you may find useful for product applications.

- [Western Blot](#)
- [Blocking Peptides](#)
- [Dot Blot](#)
- [Immunohistochemistry](#)
- [Immunofluorescence](#)
- [Immunoprecipitation](#)
- [Flow Cytometry](#)
- [Cell Culture](#)

COX11 Antibody (C-term) - Images

Western blot analysis of lysate from WiDr cell line, using COX11 Antibody (C-term)(Cat. #AP20946c). AP20946c was diluted at 1:1000. A goat anti-rabbit IgG H&L(HRP) at 1:10000 dilution was used as the secondary antibody. Lysate at 20ug.

COX11 Antibody (C-term) - Background

Exerts its effect at some terminal stage of cytochrome c oxidase synthesis, probably by being involved in the insertion of the copper B into subunit I (By similarity).

COX11 Antibody (C-term) - References

Petruzzella V.,et al.Genomics 54:494-504(1998).
Ebert L.,et al.Submitted (JUN-2004) to the EMBL/GenBank/DDBJ databases.
Zody M.C.,et al.Nature 440:1045-1049(2006).

Mural R.J.,et al.Submitted (SEP-2005) to the EMBL/GenBank/DDBJ databases.
Yu W.,et al.Genome Res. 7:353-358(1997).